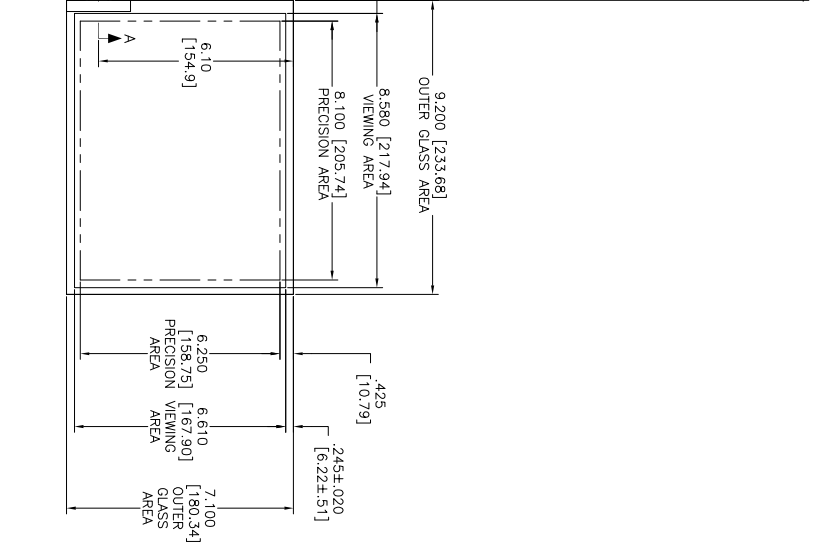
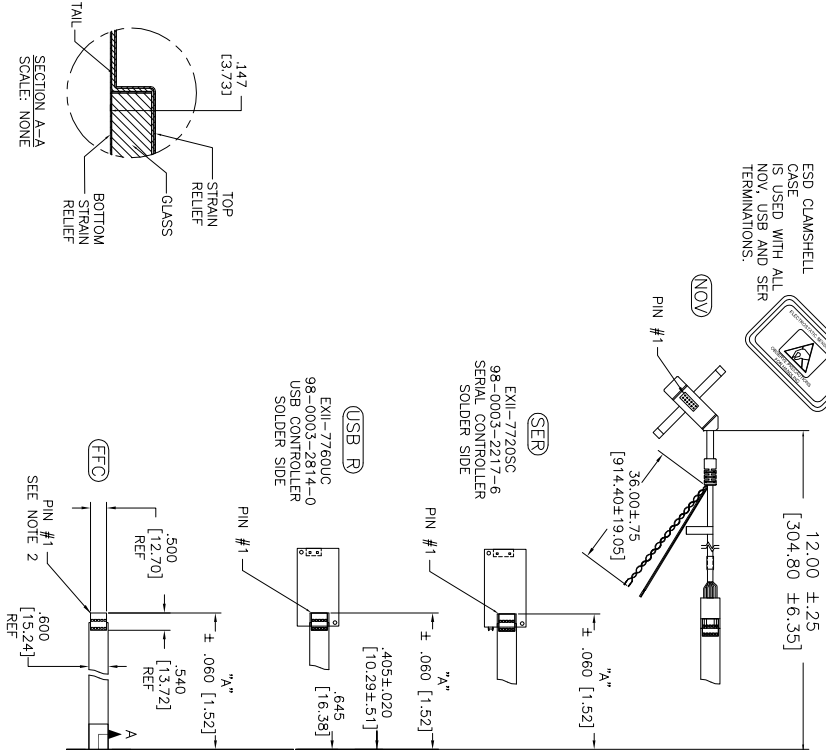
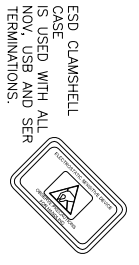


OGA DIAGONAL: 11.62 [295.18]
 VA DIAGONAL: 10.84 [275.46]
 PA DIAGONAL: 10.25 [260.26]



TOP LEVEL NUMBER	US NUMBER	TYPE	DM "A" (TOTAL GLASS TO CONNECTOR)	A/G FINISH	PROD SPEC
17-8021-203	98-0003-2503-9	FCC	4.27" [108.46]	AG500	23655
17-8021-205	98-0003-2504-7	FCC	8.00" [203.20]	AG500	23655
17-8021-206	98-0003-2505-4	NOV	SEE DWG	AG500	23655
17-8021-221	98-0003-2507-0	SFR	4.27" [108.46]	AG500	23655
17-8021-227	98-0003-2510-4	SFR	8.00" [203.20]	AG500	23655
17-8021-218	98-0003-2916-3	USB R	4.27" [108.46]	AG500	23655
17-8021-226	98-0003-2509-6	USB R	8.00" [203.20]	AG500	23655

- NOTES:
- WEIGHT OF GLASS IN GRAMS: 321±10%
 - NICOMATIC HOUSING P/N: 0L05
 NICOMATIC RECEPTACLES (PINS) MATTE TIN PLATED P/N: 14106-12
 HOUSING ORIENTED WITH LATCH DOWN

PINOUT
1 LR
2 LL
3 SHIELD
4 UL
5 UR

UNITS INCHES [MM]
 TOLERANCES UNLESS OTHERWISE SPECIFIED
 .XX ±.03 [.76]
 .XXX ±.015 [.38]
 ANGLES ±1°
 DIMS K. CROWLEY 9/05
 DO NOT SCALE DRAWING
 SCALE 1 = 1

REV	DATE	BY	CHKD	APP'D	DESCRIPTION
H					REVISED PER CO 036256
G					REVISED PER CO 033533
F					REVISED PER CO 033455

MARKETING DRAWING
 SCT32NN 10.84"

DMW K. CROWLEY 9/05
 AUTOCAD
 28209-MKT
 1 OF 1
 H

Mouser Electronics

Authorized Distributor

Click to View Pricing, Inventory, Delivery & Lifecycle Information:

[3M:](#)

[2510](#)